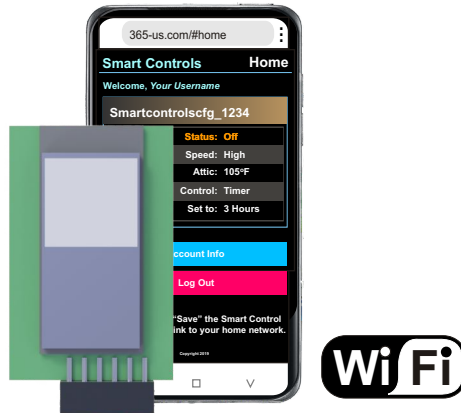


INSTALLATION, WIFI SETUP AND USER MANUAL

VentCool® WFM

WHOLE HOUSE FAN WIFI PLUG-IN MODULE



The VentCool whole house fan plug-in WiFi module is an add-on to be used with a WTT wall control. The WFM provides WiFi control of the whole house fan from anywhere using a smart phone, tablet or PC. The WiFi app uses the temperature at the WTT or a timer to control the whole house fan. The WiFi plug-in module is installed in the back of the WTT wall control.

In temperature control mode, the homeowner turns on the whole house fan and sets the comfort temperature. The VentCool whole house fan will cool the home until the indoor temperature drops just below the comfort temperature then turn off. A built-in safety timer will turn the fan off the following morning in case the homeowner forgets. In timer control mode, the homeowner turns the fan on and sets the timer interval. The fan will run for the time set then turn off. The WiFi app is also used to adjust the fan speed.

COMPONENTS:

1 - VentCool WFM Whole House Fan WiFi Plug-In Module [WFM] (p/n 580011705)

1 - Installation, WiFi Setup and User Manual (780104506)

***A VentCool Wall Control [WTT] p/n (580022703) must be installed for this plug-in module to function properly.*

READ THESE INSTRUCTIONS CAREFULLY AND COMPLETELY BEFORE PROCEEDING WITH THE INSTALLATION.

This device **MUST** be installed by a qualified agency in accordance with the manufacturer's installation instructions. The definition of a qualified agency is: any individual, firm, corporation or company which either in person or through a representative is engaged in, and is responsible for, the installation and operation of HVAC appliances, who is experienced in such work, familiar with all the precautions required, and has complied with all the requirements of the authority having jurisdiction.

Please retain these instructions after installation.

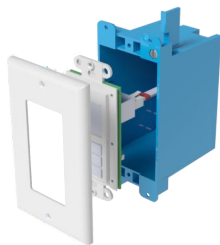
Installed By: _____ Phone: _____ Installation Date: _____



INSTALLATION SECTION

This manual is separated into two different sections: one for the Homeowner and one for the Installer. The Homeowner section contains information on WiFi setup, features and operation of the WFM module.

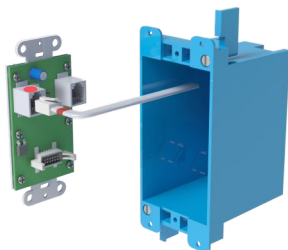
Step 1. Detach Wall Plate and WTT



Make sure the fan is OFF.

Unscrew the wall plate screws using a slotted screwdriver.
Unscrew the WTT screws using a phillips screwdriver.

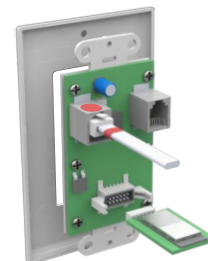
Gently pull the WTT wall control away from the wall. If needed, you can remove the low voltage plug&play cable from the red connector.



Step 2. Install the WFM Plug-In Module

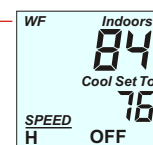
Make sure the Plug-In Module is oriented with the SILVER chip side up as illustrated. Use the guide to insert the module.

If the red plug&play cable was removed, reconnect the cable into the red connector. The LCD display should be lit. If not, check the connector.



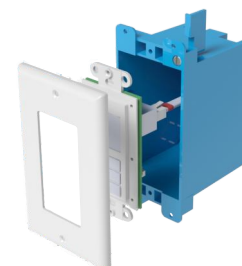
Module is SILVER side up.

Verify that WF is flashing. This indicates that the WFM module is plugged into the WTT correctly. If WF is not flashing, verify that the WFM is oriented correctly (SILVER side up) and that it's plugged in completely.



Step 3. Reattach the WTT and Wall Plate

Reattach the wall control to the plastic gang box. Reattach the wall plate to the wall control.



HOMEOWNER SECTION

This manual is separated into two different sections: one for the Homeowner and one for the Installer. The Homeowner section contains information on WiFi setup, features and operation of the Wifi app.

Things to Know

- When running your whole house fan, remember to open windows prior to operation.
- When you turn the fan on or off or change settings using the WTT Wall Control, the WiFi App settings are updated within several seconds to reflect the settings in the WTT.
- When you turn the fan on or off or change settings using the WiFi App, the WTT Wall Control settings are updated to reflect the settings in the WiFi App almost immediately.
- In temperature control, the temperature at the WTT Wall Control is used for controlling the whole house fan.
- WiFi control can be used from anywhere. You do not need to be in the home.
- For easy access to your whole house fan WiFi account, add an icon to your device home page. See page 5 of this manual.
- Homes with plaster walls with steel lathe may experience WiFi communication interference when using WiFi control.
- If power is lost, the WFM will automatically relink to the home WiFi network when power is restored.
- If you change your home WiFi network name or WiFi password, you will need to relink the WFM using steps 2 and 3 in Homeowner section of this manual.

1 Create Your Account

Your account is used to view and operate your whole house fan using WiFi and must be set up prior to linking the WiFi module to your home WiFi network.

Before getting started, make sure you know the name of your home WiFi network and have your WiFi network password handy. Be sure the WiFi is turned on in the device that you will be using to connect the WFM Module to your home WiFi network.

1-1 Open the account Login Page

- Open a web browser.

Google Chrome is recommended.



- In the address bar type:

365-us.com

For Android or Apple phones

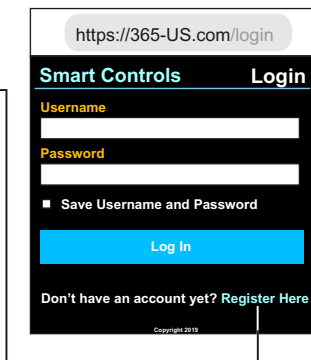
http://365-us.com

Some Apple phones may need to use this address.



- Press GO on the keyboard to open the Login page.

- Click **Register Here** towards the bottom of the page to open the Register page.

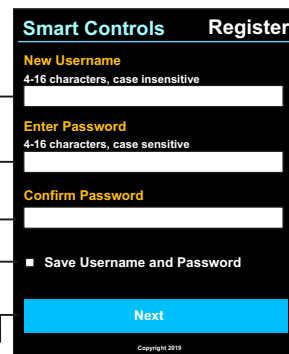


1-2 Create a Username and Password

Username is 4 to 16 characters alpha characters and not case sensitive. Password is 4 to 16 alpha characters and is case sensitive.

Tap in the boxes then use the keyboard to make an entry.

- Enter a Username.
- Enter a Password.
- Confirm Password.
- Select "Save Username and Password".
- Click NEXT to open the Home page.

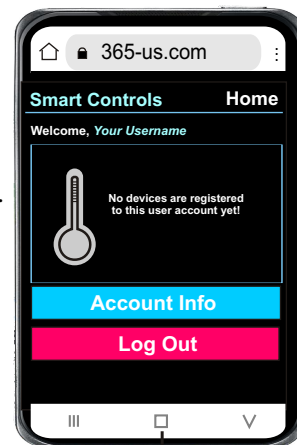
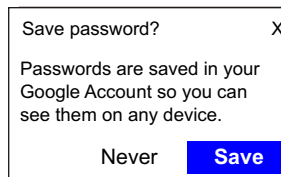


Record your Username and Password below.

Username

Password
(Case Sensitive)

- Google may display a message about saving passwords. To save your account password in Google, select SAVE. Or, press X to close the message.




- Tap the Home button on your device to close the browser window.

2 Connect the WiFi Module to the Home Network

2-1 Broadcast the WFM WiFi Network

At the WTT Wall Control

PRESS and **HOLD** **MODE** for about 7 seconds until STimer is displayed. **PRESS** **MODE** until WF OFF is displayed. **PRESS**  to select ON.

Once the WFM module has connected with the home WiFi network, WF will stop blinking and go solid.

2-2 Connect to the WFM WiFi Network

- On your device, tap the Settings icon to open the Settings page. Select WiFi or Connections to display the WiFi settings page. Tap WiFi to open the page that displays the available WiFi networks.

- Find the following network:

Smartcontrolscfg_1234
(The last four digits will vary)

- Tap the network to set as your Current network or your Connected network.



- Once connected and displaying as the Current network, tap the Home button on your device to close the Settings page.

If you receive a message about staying connected, select Stay Connected.

2-3 Connect the WFM WiFi to Your Home WiFi Network

- Open a web browser. Google Chrome is recommended.



- In the address bar type:
192.168.8.2
For Android or Apple phones

http://192.168.8.2

Some Apple phones may need to use this address.



- Press GO on the keyboard to open the WiFi Setup page.

- Tap in Username and use the keyboard to type in your username.

- Tap the Home WiFi Network box and select your Home WiFi Network.

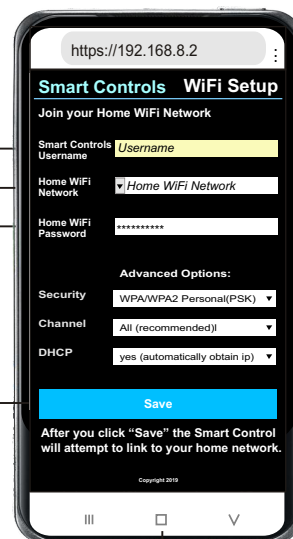
- Tap the Home WiFi Password box and type in your WiFi password.

- Click SAVE.

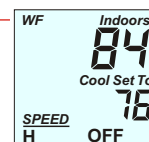
- When the following message appears, tap OK.

192.168.8.2 says
Settings were saved, the device has returned to operating mode, you may close this page. **OK**

- Tap the Home button on your device to close the WiFi Setup page.



The WFM is now connected to the home WiFi network. WF on the WTT should be displayed as solid.



3 Log In and Adding Icon to Your Home Page

3-1 Log In to Your Account

- Open a web browser.

Google Chrome is recommended.



- In the address bar type:

365-us.com

For Android or Apple phones

http://365-us.com

Some Apple phones may need to use this address.



- Press GO on the keyboard to open the Login page.

If you did not save your Username and Password, the Login page will be displayed.

- Tap Username and use the keyboard to type in your Username.

- Tap Password and type your Password.

- Tap Log In to open the Home page.

https://365-US.com/login

Smart Controls Login

Username
Username

Password

☐ Save Username and Password

Log In

Don't have an account yet? [Register Here](#)

Copyright 2019

3-2 Add 365-US.com icon to your Home Page for Easy Access

For easy access to your whole house fan WiFi account, add an icon to your device home page.

- Tap the 3 vertical dots near the address bar.

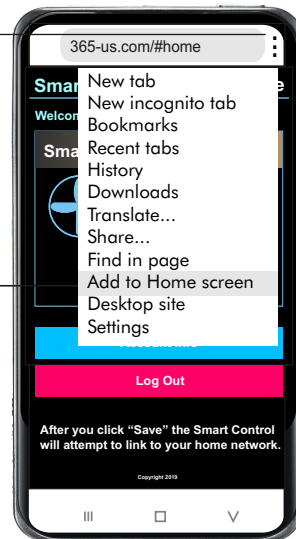
- The following box or similar displays. Select Add to Home screen.

- The following message or similar displays. Rename if desired. Tap Add.

Add to Home Screen

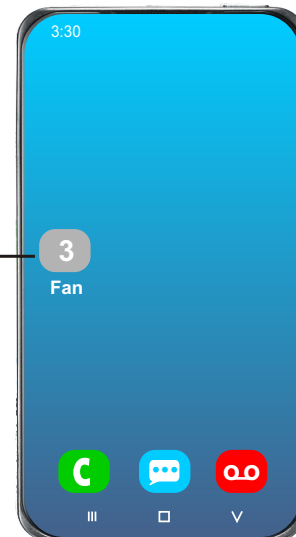
3 Fan

[Cancel](#) [Add](#)



- If the Add to Home Screen? displays again, tap Add.

- Simply tap on the App icon to access your whole house fan WiFi account.

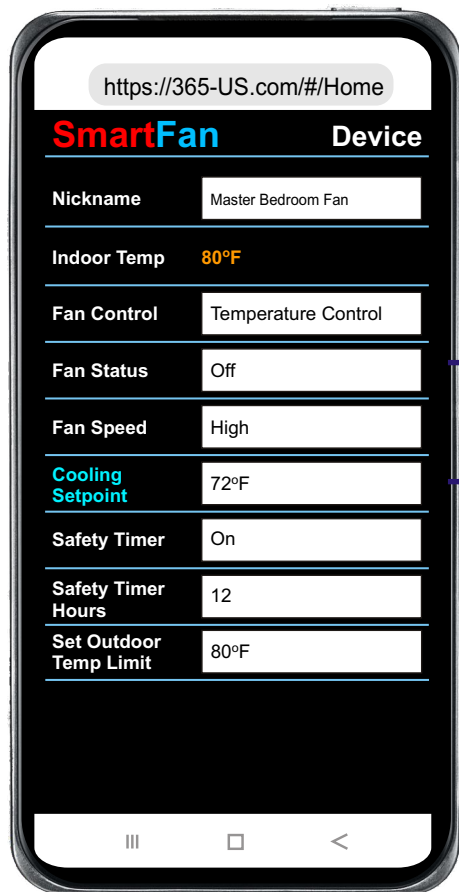


HOMEOWNER SECTION

Before operating your whole house fan, be sure to open windows and close fireplace dampers.
Refer to your whole house fan manual for more information regarding operating your fan.

App Guide for Temperature Control

Quick Start - Temperature Control



Tap Fan Status and select ON. Tap YES if sufficient windows are open or NO if not.

The fan runs when the Cooling Setpoint is below the Indoor Temperature.

To change the comfort temperature, tap Cooling Setpoint. Tap the UP or DOWN key to adjust then tap SET.

Turn On Fan X

Press YES only if sufficient windows are open for WHF operation.

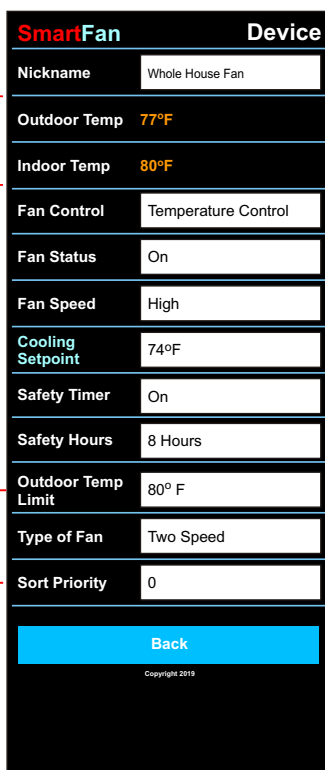
- ☐ No
- ☐ Yes

Cooling Set To X
77°F
Set

Displays indoor temperature.
Displays outdoor temperature if sensor is installed.

Set Outdoor Temp Limit for WHF operation if an outdoor temp sensor is installed.

If multiple fans are installed, homeowner can prioritize which fan is listed first on the account.



WHF name set by homeowner. Useful when multiple fans are used.

Selects Timer or Temperature control of WHF.

Turns WHF on or off.

Change the speed.

Set the Comfort Temperature for WHF cooling.

Turn the Safety Timer on or off.

Set the number of hours before the WHF is turned off.

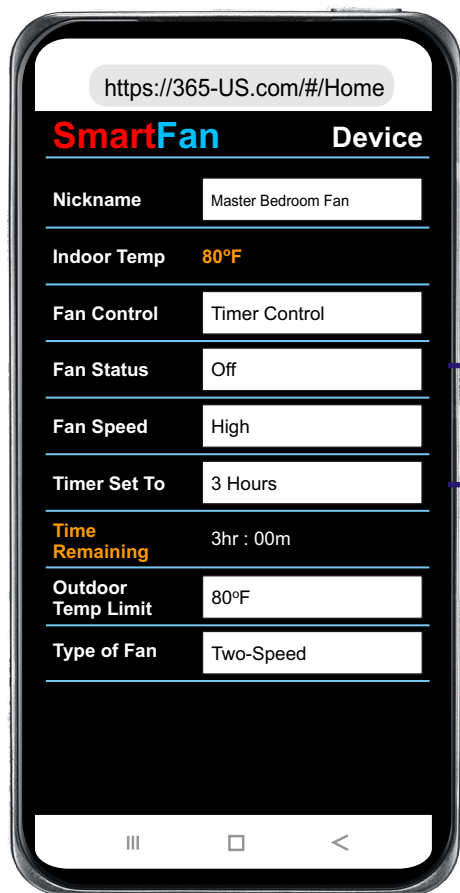
Select the Type of Fan. (Already set in the WTT Wall Control).

Are you sure you want to turn the Safety Timer off?
No do not turn off ☒
Yes turn off Safety Timer ☐

HOMEOWNER SECTION

Before operating your whole house fan, be sure to open windows and close fireplace dampers.
Refer to your whole house fan manual for more information regarding operating your fan.

App Guide for Timer Control



Quick Start - Timer Control

Tap Fan Status and select ON. Tap YES if sufficient windows are open or NO if not.

The fan runs for the length of time displayed.

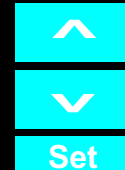
Turn On Fan X

Press YES only if sufficient windows are open for WHF operation.

- ☐ No
- ☐ Yes

To change the timer, tap Timer Set To. Tap the UP or DOWN key to adjust then tap SET.

To set a preferred Timer, make sure the fan is OFF. Tap Timer Set To and adjust the Timer. This Timer will be used each time the fan is turned ON.

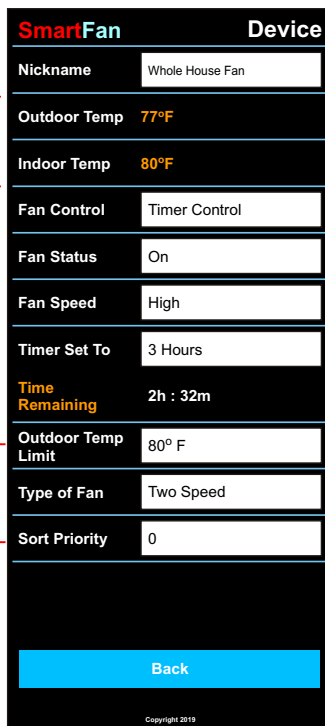


Timer Set To
3 Hours

Displays indoor temperature.
Displays outdoor temperature if sensor is installed.

Set Outdoor Temp Limit for WHF operation if an outdoor temp sensor is installed.

If multiple fans are installed, homeowner can prioritize which fan is listed first on the account.



WHF name set by homeowner. Useful when multiple fans are used.

Selects Timer or Temperature control of WHF.

Turns WHF on or off.

Change the speed.

Change the Timer hours.

Displays time remaining in current Timer cycle.

Select the Type of Fan.
(Already set in the WTT Wall Control).

MAINTENANCE AND TROUBLESHOOTING

The WF is blinking on the WTT Wall Control.

WF blinking indicates that the WiFi connection to the home WiFi network has been lost. Check the home WiFi network.

The display indicates On but the fan is not running.

In Temperature control, if the WiFi App indicates On but the fan is not running, make sure the Set To temperature is a few degrees lower than the Indoor temperature.

If an outdoor temperature sensor is installed and the outdoor temperature is above the limit set, whole house fan operation may be delayed. When delayed, "LIMIT" blinks on the WTT.

SPARE PARTS AND ACCESSORY LIST

| Field Controls Part Number | Model Number | Description |
|----------------------------|--------------|---|
| 580011702 | WTT | Whole House Fan Wall Control with Temperature, Timer and Speed Control. For 1, 2 or 3-Speed PSC or ECM fans. Includes 50 FT plug&play cable and hardware kit. |
| 580011701 | FC3JF | Whole House Fan Control Board. For 1, 2 or 3-Speed PSC or ECM fans. |
| 580011705 | WFM | WiFi Control Upgrade Kit. Includes WLM WiFi Plug-In Module. |
| 580011550 | PNP50 | Cable 50 FT PNP50 VentCool |

This manual may be downloaded and printed from the Field Controls website (www.fieldcontrols.com)

WARRANTY

For warranty information about this or any Field Controls product, visit:
www.fieldcontrols.com

Field Controls Technical Support
1.800.742.8368
fieldtec@fieldcontrols.com

Field Controls Customer Service
1.252.522.3031
sales@fieldcontrols.com



9154 Stellar Ct
Corona, CA 92883

Phone: 252.522.3031 • Fax: 252.522.0214
www.fieldcontrols.com

2630 Airport Road
Kinston, NC 28504